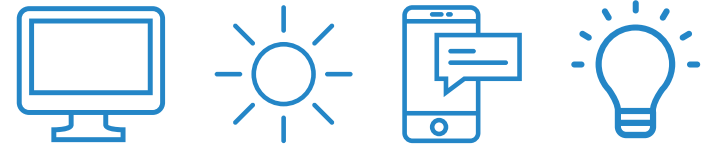


CHEMTECH

READYMADE COMPUTER GLASSES

WHAT IS BLUE LIGHT?



Blue light refers to a specific type of light from the electromagnetic light spectrum. The main source of blue light comes from the sun, however it can be emitted through man-made digital devices such as TVs, smartphones, tablets and computers. Blue light has been linked to digital eye strain, potential eye damage, and possible long-term vision problems.

HOW DOES DIGITAL EYE STRAIN EFFECT US?



With an increase in digital technology, there has been an increase in blue light exposure. In turn, many individuals suffer from the physical eye discomfort after screen use for longer than two hours at a time, also known as digital eye strain.

65% OF AMERICANS REPORT EXPERIENCING SYMPTOMS OF DIGITAL EYE STRAIN.

-visionimpactinstitute.org

SYMPTOMS REPORTED:

36% - NECK & SHOULDER PAIN

35% - EYE STRAIN

25% - HEADACHE

25% - BLURRED VISION

24% - DRY EYES

-visionimpactinstitute.org



More than 87 percent of Americans report using digital devices for more than two hours per day, and 52.2 percent report using two digital devices simultaneously.

HOW CHEMTECH CAN HELP



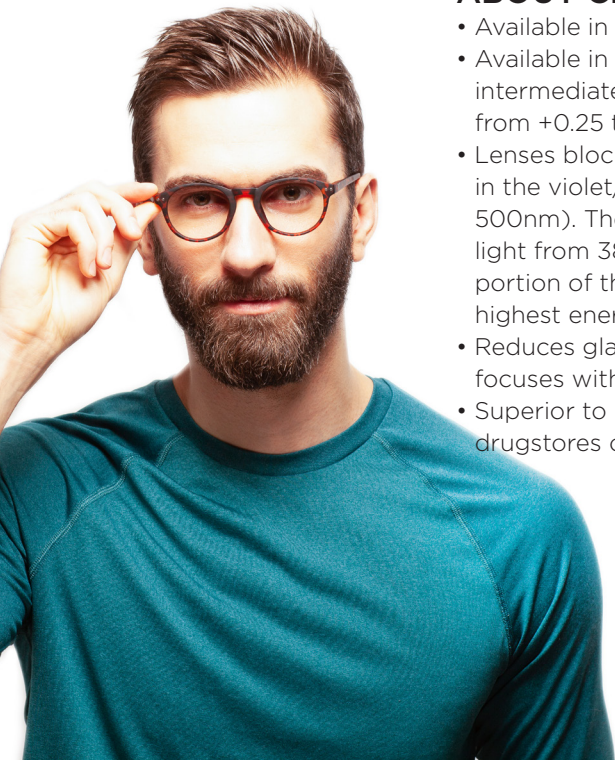
Our lenses are coated with an anti-reflective coating that helps reflect and absorb a portion of harmful blue light that is emitted from digital devices. When you wear ChemTech while using digital devices, your eyes experience much less stress and strain.



Everyday, we spend hours in front of back-lit devices such as phones, computers and tablets. Too much exposure to the blue light that is emitted from these devices can be potentially harmful to our eyes and overall health. Some common symptoms one might feel after excessive screen time are headaches, backaches, stress, and digital eye strain.

ABOUT CHEMTECH

- Available in 4 different frame styles
- Available in plano and single vision intermediate distance powers ranging from +0.25 to +3.00
- Lenses block approx. 35% of the light in the violet/blue spectrum (380nm to 500nm). The lenses block over 50% of the light from 380nm to 450nm which is the portion of the violet/blue spectrum with the highest energy content.
- Reduces glare, improves contrast and focuses without distorting color or images
- Superior to readers that are available in drugstores or sold by mass merchants



CHEMTECH



1501 Reedsdale Street, Suite 203
Pittsburgh, PA 15233

Office: 888.321.3939 • Fax: 412.594.7024 • Email: info@eyenavision.com

EYENAVISION.COM